

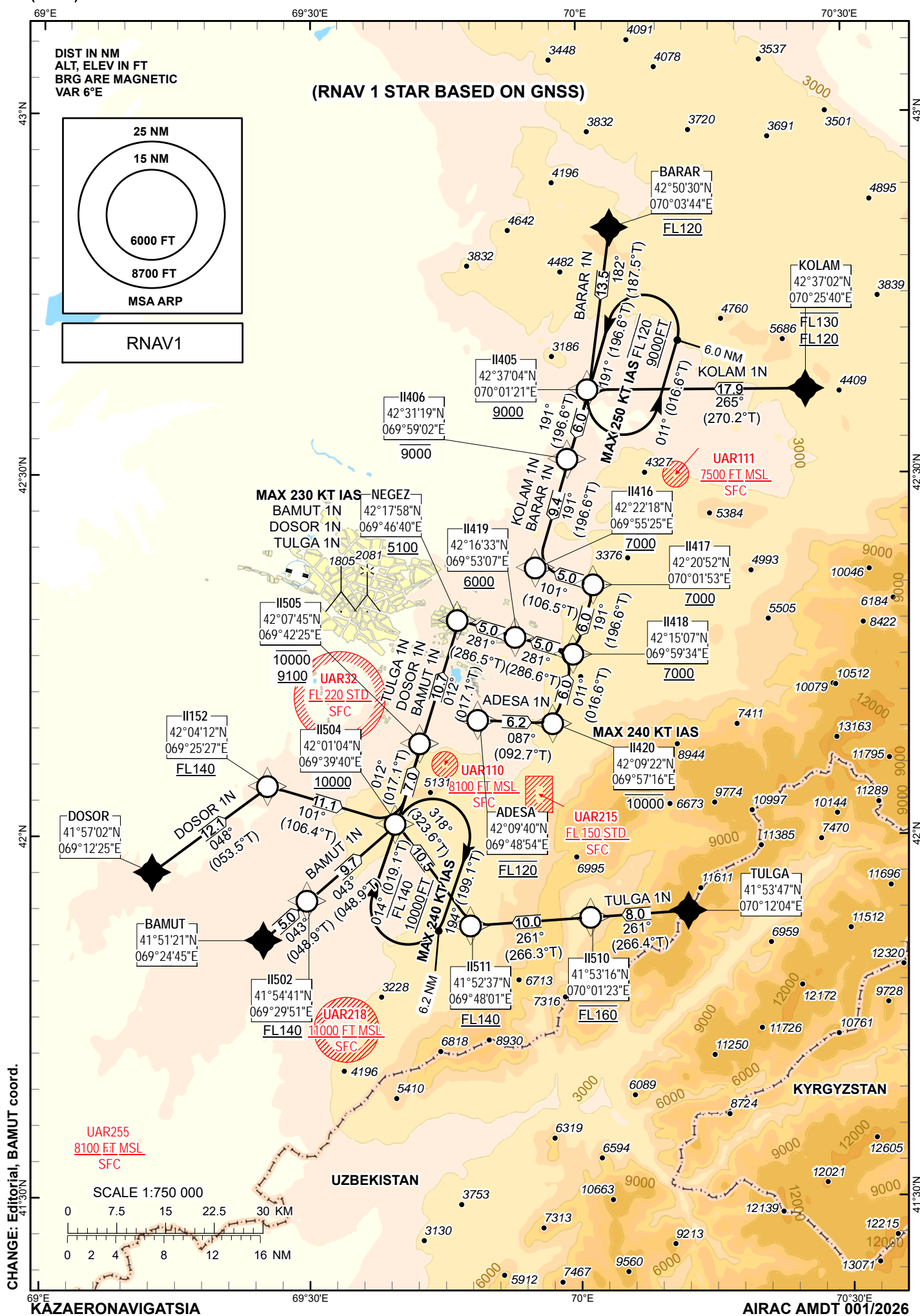
STANDARD ARRIVAL  
CHART - INSTRUMENT  
(STAR) - ICAO

TRANSITION ALTITUDE  
10000 FT

SHYMKENT TOWER 125.9  
SHYMKENT ATIS (EN) 119.2  
SHYMKENT ATIS (RU) 126.6

ADESA 1N, BAMUT 1N,  
BARAR 1N, DOSOR 1N,  
KOLAM 1N, TULGA 1N.

SHYMKENT  
RWY 28



TABULAR DESCRIPTION

ADESA 1N											
Serial Number	Path Descriptor	Waypoint Identifier	Fly - over	Course °M(°T)	Magnetic Variation(°)	Distance NM	Turn Direction	Altitude FT	Speed KT	VPA (°)	Navigation Specification
10	IF	ADESA	-	-	+5.5	-	-	@FL120	-	-	RNAV 1
20	TF	II420	-	087(092.7)	+5.5	6.2	R	-10000	-240	-3	RNAV 1
30	TF	II418	-	011(016.6)	+5.5	6.0	L	+7000	-	-3.1	RNAV 1
40	TF	II419	-	281(286.6)	+5.5	5.0	L	+6000	-	-2.8	RNAV 1
50	TF	NEGEZ	-	281(286.5)	+5.5	5.0	-	+5100	-	-2.6	RNAV 1

BAMUT 1N											
Serial Number	Path Descriptor	Waypoint Identifier	Fly - over	Course °M(°T)	Magnetic Variation(°)	Distance NM	Turn Direction	Altitude FT	Speed KT	VPA (°)	Navigation Specification
10	IF	BAMUT	-	-	+5.5	-	-	-	-	-	RNAV 1
20	TF	II502	-	043(048.9)	+5.5	5.0	R	+FL140	-	-	RNAV 1
30	TF	II504	-	043(048.9)	+5.5	9.7	-	+10000	-	-3.9	RNAV 1
40	TF	II505	-	012(017.1)	+5.5	7.0	L	+9100 -10000	-	-1.2	RNAV 1
50	TF	NEGEZ	-	012(017.1)	+5.5	10.7	-	+5100	-230	-3.5	RNAV 1

BARAR 1N											
Serial Number	Path Descriptor	Waypoint Identifier	Fly - over	Course °M(°T)	Magnetic Variation(°)	Distance NM	Turn Direction	Altitude FT	Speed KT	VPA (°)	Navigation Specification
10	IF	BARAR	-	-	+5.5	-	-	@FL120	-	-	RNAV 1
20	TF	II405	-	182(187.5)	+5.5	13.5	L	+9000	-	-1.4	RNAV 1
30	TF	II406	-	191(196.6)	+5.5	6.0	R	-9000	-	-1.6	RNAV 1
40	TF	II416	-	191(196.6)	+5.5	9.4	-	+7000	-	-2	RNAV 1
50	TF	II417	-	101(106.5)	+5.5	5.0	L	+7000	-	-	RNAV 1
60	TF	II418	-	191(196.6)	+5.5	6.0	R	+7000	-	-	RNAV 1
70	TF	II419	-	281(286.6)	+5.5	5.0	R	+6000	-	-	RNAV 1
80	TF	NEGEZ	-	281(286.5)	+5.5	5.0	-	+5100	-	-3.6	RNAV 1

DOSOR 1N											
Serial Number	Path Descriptor	Waypoint Identifier	Fly - over	Course °M(°T)	Magnetic Variation(°)	Distance NM	Turn Direction	Altitude FT	Speed KT	VPA (°)	Navigation Specification
10	IF	DOSOR	-	-	+5.5	-	-	-	-	-	RNAV 1
20	TF	II152	-	048(053.5)	+5.5	12.1	R	+FL140	-	-0.8	RNAV 1
30	TF	II504	-	101(106.4)	+5.5	11.1	R	+10000	-	-2.6	RNAV 1
40	TF	II505	-	012(017.1)	+5.5	7.0	L	+9100 -10000	-	-1.2	RNAV 1
50	TF	NEGEZ	-	012(017.1)	+5.5	10.7	-	+5100	-230	-3.5	RNAV 1

KOLAM 1N											
Serial Number	Path Descriptor	Waypoint Identifier	Fly - over	Course °M(°T)	Magnetic Variation(°)	Distance NM	Turn Direction	Altitude FT	Speed KT	VPA (°)	Navigation Specification
10	IF	KOLAM	-	-	+5.5	-	-	+FL120 -FL130	-	-	RNAV 1
20	TF	II405	-	265(270.2)	+5.5	17.9	R	+9000	-	-1.1	RNAV 1
30	TF	II406	-	191(196.6)	+5.5	6.0	L	-9000	-	-1.6	RNAV 1
40	TF	II416	-	191(196.6)	+5.5	9.4	-	+7000	-	-2	RNAV 1
50	TF	II417	-	101(106.5)	+5.5	5.0	L	+7000	-	-	RNAV 1
60	TF	II418	-	191(196.6)	+5.5	6.0	R	+7000	-	-	RNAV 1
70	TF	II419	-	281(286.6)	+5.5	5.0	R	+6000	-	-	RNAV 1
80	TF	NEGEZ	-	281(286.5)	+5.5	5.0	-	+5100	-	-3.6	RNAV 1

TULGA 1N											
Serial Number	Path Descriptor	Waypoint Identifier	Fly - over	Course °M(°T)	Magnetic Variation(°)	Distance NM	Turn Direction	Altitude FT	Speed KT	VPA (°)	Navigation Specification
10	IF	TULGA	-	-	+5.5	-	-	-	-	-	RNAV 1
20	TF	II510	-	261(266.4)	+5.5	8.0	L	@FL160	-	-	RNAV 1
30	TF	II511	-	261(266.3)	+5.5	10.0	-	+FL140	-	-2.8	RNAV 1
40	TF	II504	-	318(323.6)	+5.5	10.5	R	+10000	-	-2.7	RNAV 1
50	TF	II505	-	012(017.1)	+5.5	7.0	R	+9100 -10000	-	-1.2	RNAV 1
60	TF	NEGEZ	-	012(017.1)	+5.5	10.7	-	+5100	-230	-3.5	RNAV 1

WAYPOINT LIST

WPT	COORD	
ADESA	420940.00N	0694854.00E
BAMUT	415121.00N	0692445.00E
BARAR	425030.00N	0700344.00E
DOSOR	415702.00N	0691225.00E
II152	420412.16N	0692526.61E
II405	423703.89N	0700121.23E
II406	423118.75N	0695902.16E
II416	422217.94N	0695525.14E
II417	422052.37N	0700152.99E
II418	421507.23N	0695934.48E
II419	421632.68N	0695307.16E
II420	420922.04N	0695716.39E
II502	415441.28N	0692950.68E
II504	420103.81N	0693940.03E
II505	420744.57N	0694225.35E
II510	415316.38N	0700122.61E
II511	415236.70N	0694801.12E
KOLAM	423702.00N	0702540.00E
NEGEZ	421757.76N	0694639.56E
TULGA	415347.00N	0701204.00E